

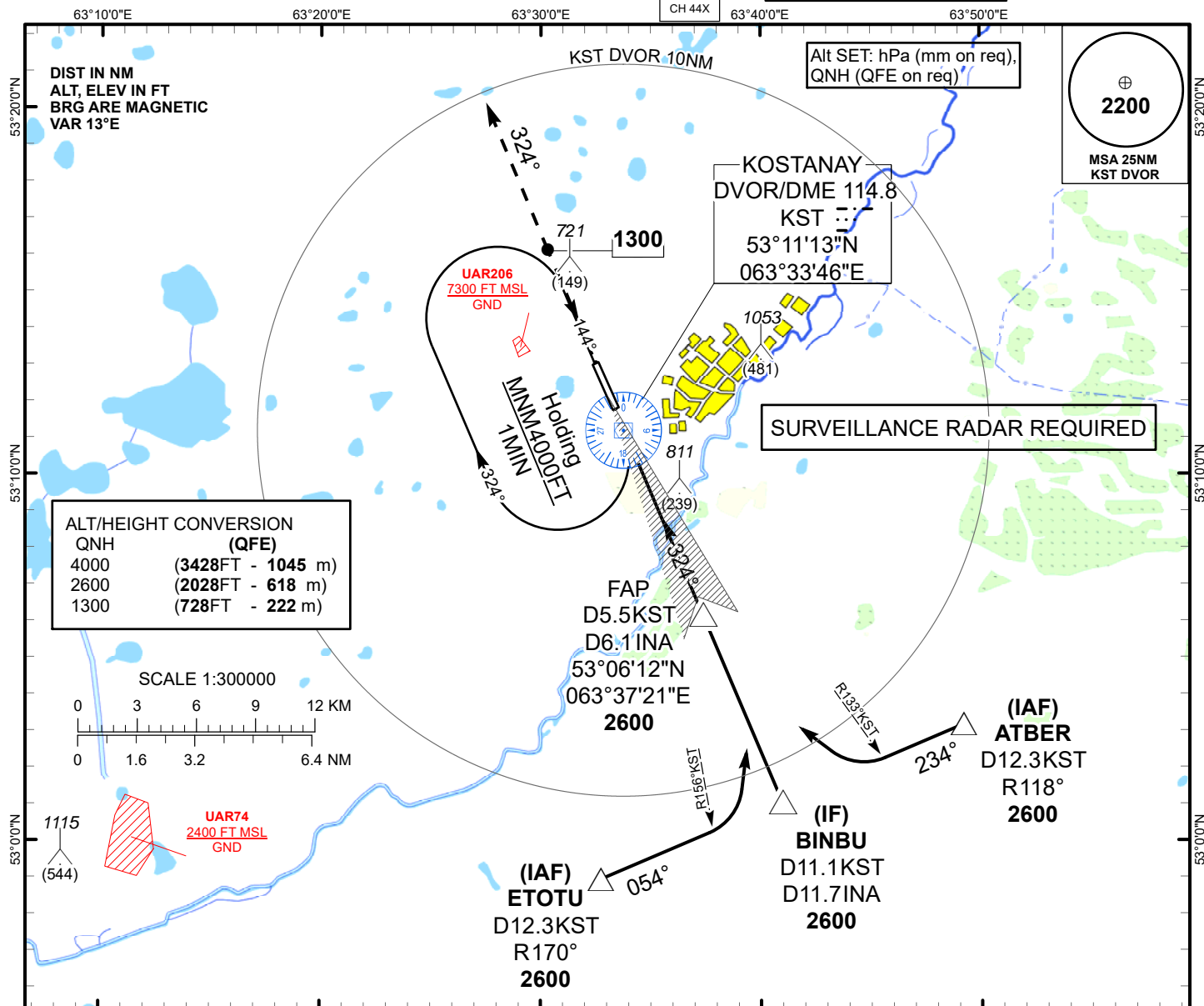
INSTRUMENT APPROACH
CHART
ICAO

AERODROME ELEV **601ft**
HEIGHTS RELATED TO
THR RWY 32 - ELEV **572ft**

ILS
LLZ 110.7
INA
GP 330.2
CH 44X

KOSTANAY TOWER 129.30
KOSTANAY ATIS (EN) 118.5
KOSTANAY ATIS (RU) 126.8

KOSTANAY
ILS/DME
RWY 32



MISSED APPROACH

Climb on track 324° to 2600 ft.
After passing 1300 ft radar
vectoring will be provided.

TRANSITION ALT
10000

FAP
D6.1 INA
D5.5 KST
2600

IF
BINBU
D11.7 INA
D11.1 KST
2600

ILS RDH 49

THR RWY 32

ELEV 572

DVOR/DME
KST

GP 3.0°

324°

324°

0 1 2 3 4 5 6 7 8 9 10 11 12

Aircraft Category

A

B

C

D

DIST to THR
DME INA

NM

6.1

6

5

4

3

2

1

Straight-in
Approach
OCA/H

ILS CAT I

772(200)

772(200)

782(210)

792(220)

DME KST

NM

5.5

5.4

4.4

3.4

2.4

1.4

0.4

ALTITUDE

FT

2600

2563

2235

1908

1584

1261

940

HEIGHT

FT

2002

1991

1663

1336

1012

689

368

DME INA ZERO RANGED TO THR RWY 32

Aerodrome
Operating Minima
DH ft x RVR(CMV)

ILS CAT I

GS

Kt

80

100

120

140

160

180

Desc.Rate(5.2%)

ft/min

420

530

630

740

850

960

CHANGE: Add ATIS, editorial.

KOSTANAY
ILS/DME

AERONAUTICAL DATA TABULATION

ILS approach to RWY32 from BINBU, ATBER, ETOTU	
Fix/point	Coordinates
DVOR/DME KST	53° 11' 13.0"N 063° 33' 45.5"E
(FAP) D5.5 KST, D6.1 INA	53° 06' 11.9"N 063° 37' 21.2"E
BINBU (IF) D11.1 KST, D11.7 INA	53° 01' 04.8"N 063° 40' 57.2"E
ATBER (IAF) R118°, D12.3 KST	53° 03' 11.3"N 063° 49' 11.4"E
ETOTU (IAF) R170°, D12.3 KST	52° 58' 57.8"N 063° 32' 43.9"E
THR RWY 32	53° 11' 49.00"N 063° 33' 23.08"E
INA LOC	53° 13' 29.9"N 063° 32' 11.5"E